



KIPINGS

TADWORTH

1 KIPINGS

TADWORTH PARK, TADWORTH, KT20 5TN



2 RECEPTION ROOMS



KITCHEN BREAKFAST ROOM



3 BEDROOMS



BATHROOM & SHOWER ROOM

APPROX. 1332.37 FT² | 123.78 M²

An attractive part tile hung detached house located at the entrance to a small cul de sac forming part of the Tadworth Park development, built in 1988 by Wimpey Homes.

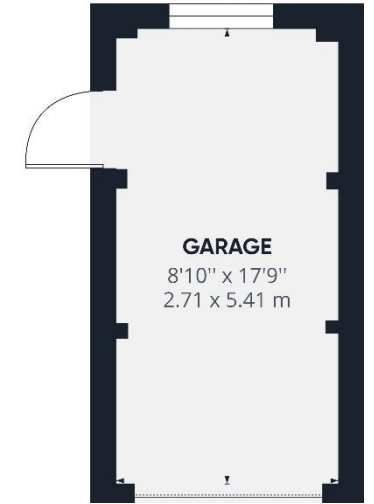
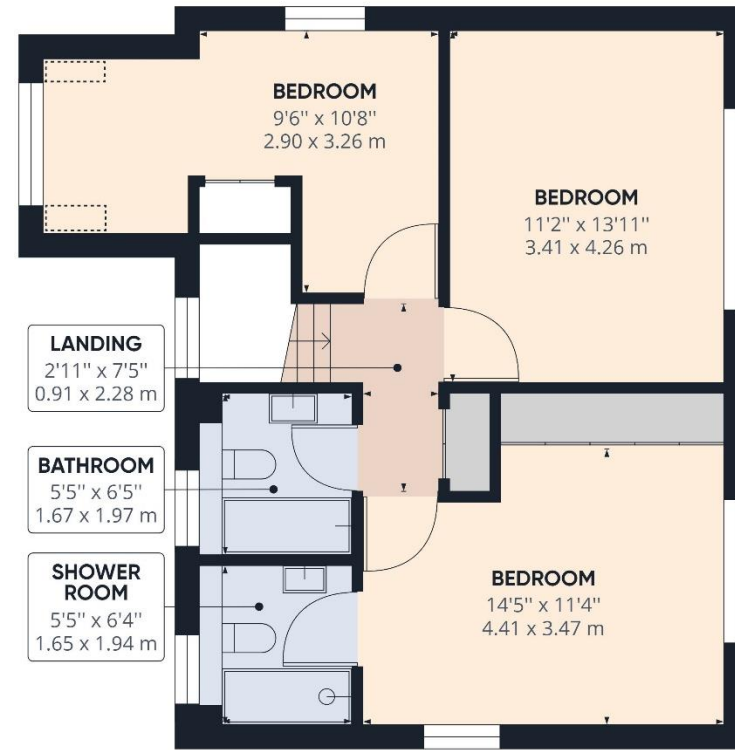
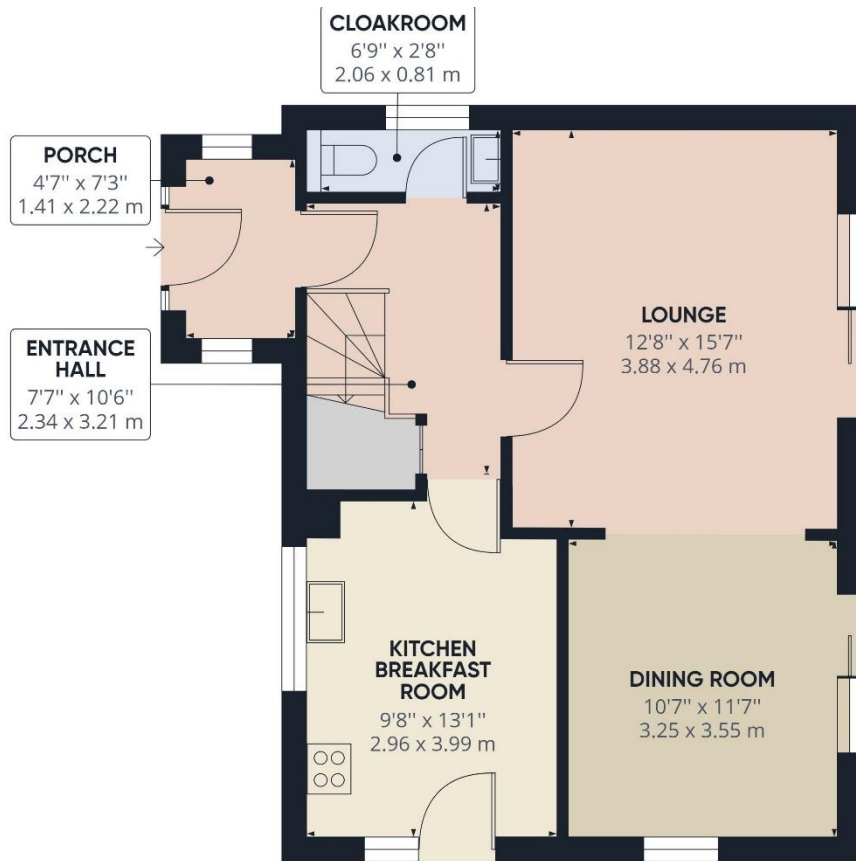
The property has been very well maintained throughout and features an open plan living space with lounge and separate dining rooms both with access out onto the garden, a good size and well equipped kitchen breakfast room, cloakroom, three bedrooms, en-suite shower room and a bathroom.

Outside, there is a small, landscaped front garden with a brick boundary wall and a pretty rear garden with access to a garage and parking at the rear.

Kipings is just a ten minute walk from the village shops and station and even closer to the village doctors surgery, Tadworth Primary School and the open spaces of Walton Heath and a selection of 'gastro' pubs.

ASKING PRICE: **£750,000**







WALTON ON THE HILL 61 Walton Street, Walton-on-the-Hill, Surrey KT20 7RZ
01737 814877



IMPORTANT We would inform prospective purchasers that these sales particulars have been prepared as a general guide only. A detailed survey has not been carried out, nor the services, appliances and fittings tested. Room sizes should not be relied upon for furnishing purposes and are approximate. If floor plans are included, they are for guidance only and illustration purposes only and may not be to scale. If there are any important matters likely to affect your decision to buy, please contact us before viewing the property.

michael-everett.co.uk